



**WEST PHILLY  
PROMISE  
NEIGHBORHOOD**

*EDUCATIONAL  
SUPPORT*

The West Philly Promise Neighborhood supports cradle to career opportunities for children living or going to school in Belmont, Mantua, Mill Creek, Powelton Village, and West Powelton/Saunders Park. The initiative looks to improve education, health, and economic successes for children, their families and communities.



## Promise Neighborhood Grant Goals

The grant goals focus around building a supportive environment for children to live and learn. This data snapshot focuses on families and communities supporting Promise Neighborhood student learning.



Children enter Kindergarten ready to succeed



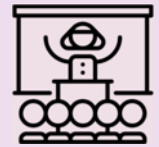
Students are proficient in core academic subjects



High school students graduate with the skills they need to continue their education and achieve career goals



Children and their families thrive in healthy, safe and stable communities



Families and communities are actively engaged in student learning

The West Philadelphia Promise Neighborhood is a collaboration of the following organizations and entities:



PEOPLE'S EMERGENCY CENTER  
*Nurturing Families, Strengthening Neighborhoods, Driving Change.*



Promise Neighborhood Civic Partners: Belmont Alliance Civic Association, East Parkside Civic Association, Mantua Civic Association, Mill Creek Advisory Council, Powelton Village Civic Association, West Belmont Civic Association, and West Powelton/Saunders Park Civic Association

This work is supported by a 5-year grant from the U.S. Department of Education



Families and communities are actively engaged in student learning

Families support learning

Access to learning tools

In 2018, Promise Neighborhood teams wearing orange shirts knocked on doors to ask families to take a survey about health, housing, safety, education, employment and the community. The goal is to help identify the needs of families and help us understand whether Promise Neighborhood is achieving what it said it would do. Nearly 300 families representing over 500 children took the survey! Additional families will be selected in 2019 and 2021. Below are some results of the **educational support** questions we asked.

## Caregiver support of their children's education:

In the 2017-2018 school year, an adult in a Promise Neighborhood household has shown active support of their child's education and/or school in the following ways:

**85%** attended a parent teacher conference

**64%** attended a school or class event

**60%** attended a PTA meeting

**37%** served as a class or school volunteer



**84%** of high school caregivers expect their children to pursue a Bachelor's Degree or higher



**62%** of high school caregivers often talk to their children about college



**81%** of families have internet access at home

## What do caregivers think about their children's schools?

	Promise Neighborhood Schools	Other Schools
Agree that their child's teacher encourages hard work	<b>93%</b>	<b>89%</b>
Agree the school meets the specific academic needs of their child	<b>82%</b>	<b>85%</b>
Agree the school meets the specific non-academic needs of my child (for example, behavioral and social-emotional needs)	<b>61%</b>	<b>66%</b>
Are pleased with the quality of education at their child's school	<b>83%</b>	<b>76%</b>